

# VARIO - OPERATING KEY

The VARIO Operating Key is versatile, ergonomic, compact and available in the specifications VARIO, SUPER-VARIO and VARIO-LED. These make the VARIO a high quality, multifunctional companion for your daily routine.

VARIO



500 Nm

SUPER  
VARIO



1000 Nm

VARIO LED



\*\* MISSION STATEMENT \*\*

## VERSATILE

The VARIO Operating Key is a special tool to actuate valves and hydrants above and below the ground, as well as in manholes. By using a wide range of operation insets the VARIO Key can be used to operate valves as well as hand-wheels. Insets can be changed quickly and easily by pressing integrated compression pieces. By adding a ratchet, cross joint or other modifications, the VARIO is even more versatile.

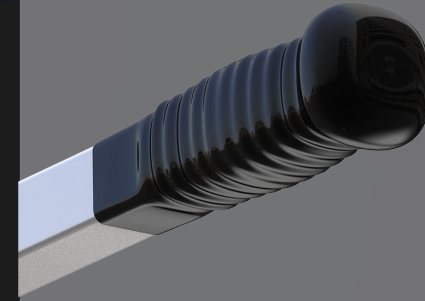
By exclusively using stainless steel pipe-in-pipe construction, the VARIO is GS approved (German seal of quality for tools) and can transmit up to 400 Nm of torque or up to 1000 Nm using the SUPER-VARIO.



\*applies to VARIO and VARIO-LED

## COMPACT

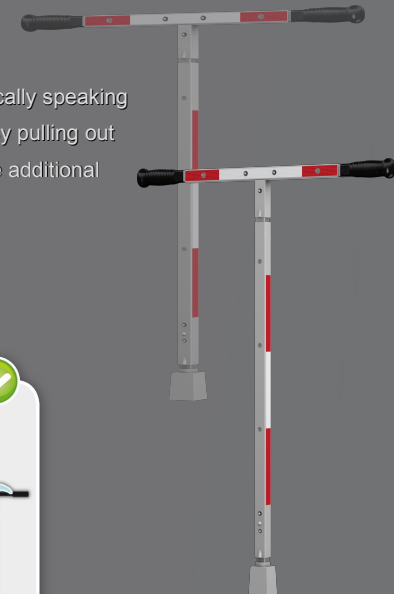
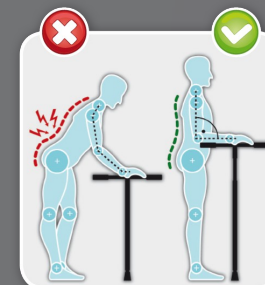
The VARIO Key can be disassembled and transported easily, compactly and safely using the transport bag provided. The pipe-in-pipe construction also reduces the weight of the VARIO Key significantly, making handling and transport even more convenient.



## ERGONOMIC

The VARIO Operating Key is easily adjustable in height, which enables the user to stand in an upright position while actuating valves.

This position is ergonomically speaking extremely back-friendly. By pulling out both sides of the T-handle additional torque can be generated.



# VARIO - BASIC CONFIGURATION

## Standard Set

**VARIO**  
< 400 Nm - (7,50 kg)

**SUPER VARIO**  
< 1000 Nm - (10,00 kg)

- 1x Telescopic rod
- 1x T-handle
- 1x Coupling socket "small" for service valves\*
- 1x Coupling socket "large" for gate valves
- 1x Surface-box hammer
- 1x Transport bag



## Standard Set

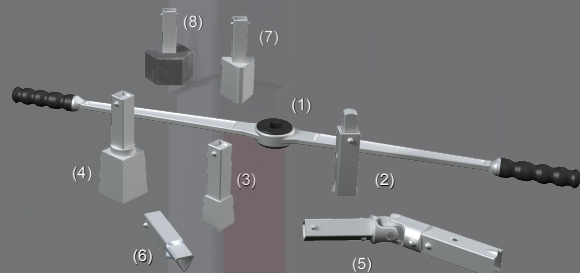
**VARIO LED**  
< 500 Nm - (8,00 kg)  
Not available for SUPER-VARIO

- 1x LED-Telescopic rod
- 1x T-handle
- 1x LED-Coupling socket "small" for service valves
- 1x LED-Coupling socket "large" for gate valves
- 1x Surface-box hammer
- 1x Transport bag
- 1x Charger (230V)
- 1x Vehicle-Adaptor (12V)



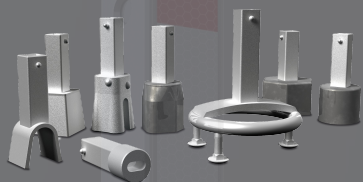
# VARIO - OPERATION INSETS

- (1) Double-sided ratchet
- (2) Ratchet adaptor
- (3) Coupling socket "small" for service valves
- (4) Coupling socket "large" for gate valves
- (5) Cross joint
- (6) Coupling socket "small" Three-Edged-Wedge
- (7) Coupling socket "large" Three-Edged-Wedge
- (8) Coupling socket Hexagonal



## Additional shapes

of coupling sockets are available on request



Not exactly what you are looking for?

Contact us!

Our staff is happy to assist with individual solutions.



\*\* MISSION STATEMENT \*\*



**KETTLER GmbH**  
Köhlerstraße 8  
46286 Dorsten-Wulfen  
Telefon (+49 23 69) 91 82-0  
Telefax (+49 23 69) 91 82 91  
info@kettlerweb.de  
www.kettlerweb.de

## Notice

Additional information is available in our detailed catalogue.  
You will find the corresponding download link on our website [www.kettlerweb.de](http://www.kettlerweb.de)  
or by scanning the QR-Code above with your Smartphone or Tablet.



OPERATING KEY

# VARIO