



Cascade

Manufacturers & Suppliers of Pipe Fittings
for the Water and Gas Industries

Ductile Lugged Vs Stainless Steel UPT's

Ductile lugged repair clamps are often referred to as temporary repair clamps as their design limits the working pressure they can hold. This applies even more when they are used as an under pressure tee. Cascade repair Clamps are for PERMANENT use as their design and construction methods allow them to overcome these problems.

Common faults with Ductile Lugged UPT'S and Repair Clamps:

- Ductile lugs break as installer over tightens to stop the leak
- Steel flanges, bolts and lugs rust.
- The bodies use a thin stainless steel so that it can be crimped into the ductile lugs, this will not hold 16 bar pressure on all sizes.
- The stainless body can move in the lugs as it is not welded into place, any movement is the equivalent to loose bolts causing pressure failure and leaks.
- Three materials are being used in one fitting, Ductile lugs, Stainless Steel body and Mild Steel Flange.



Ductile lugged UPT removed from the ground



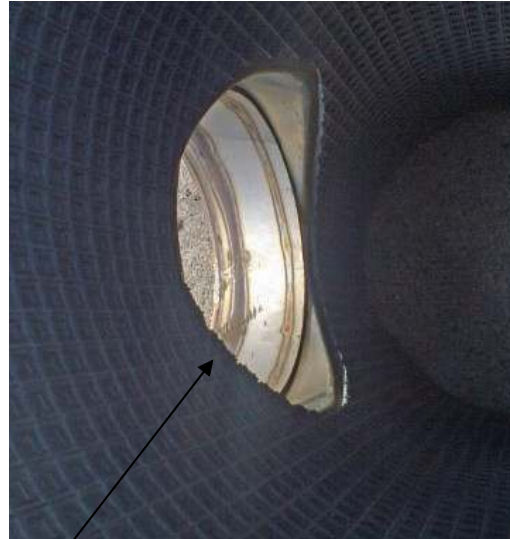
Cascade

Manufacturers & Suppliers of Pipe Fittings
for the Water and Gas Industries

Lugs break as they are over tightened trying to achieve a tight seal.

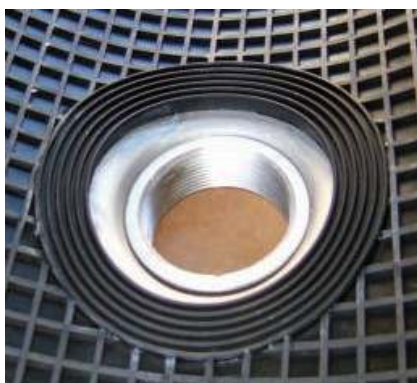


Stainless body is crimped round lugs allowing movement.



No o-ring around outlet reduces the pressure performance.

Cascade Clamps supply high quality all welded stainless steel under pressure tee's at competitive prices. The tee's have a pressure rating of 16 bar and with a life expectancy of 50 years, repairs or replacements are reduced saving costs and time.



One piece moulded o-ring gasket increases pressure rating and ensures a tight seal around the outlet.



All stainless steel welded construction, no ductile or mild steel used.

For more information, prices and availability please contact us.