



- 1 Easy handling
- 2 Strong worm-drive hose clip

## The changeover connector with 2 lip seals

### Materials

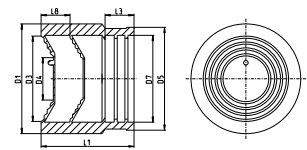
W1	W2	W3	W4	W5
	x			

- Material, Connector: EPDM
- Material, Worm-drive hose clip band: AISI 430

### Advantages at a glance

- The connection of feed or suction lines to a pipe – either made of steel or plastics – is easily and safely achieved with the FIX connector.

### Technical data.



NORMACONNECT® DCS FIX, EPDM with TORRO W2, Changeover Connector

Designation	DN	D1 (mm)	D3 (mm)	D4 (mm)	D5 (mm)	D7 (mm)	L1 (mm)	L3 (mm)	L8 (mm)	W2 Product No.
FIX DN 50	50	72	56	30	67.5	57	63	19	19	0245 9003 050
FIX DN 70	70	92	75	41	86.5	77	77	19	24	0245 9003 070
FIX DN 80 56-75	80	92	75	41	91	81	77	19	24	0245 9003 075
FIX DN 80 75-90	80	108	90	58	93	81	88	19	23	0245 9003 080
FIX DN 100	100	128	110	78	118	108	95	21	23	0245 9003 100
FIX DN 125	125	145	126	90	145	132	103	21	27	0245 9003 125